



# WILDFOTO AFRICA

PROFESSIONAL PHOTOGRAPHY | CORPORATE MEDIA | COMMUNICATIONS



PhotoMail is an occasional picture newsletter for those with an interest in photography, nature and the environment, travel, Africa, Zambia, African life and happening things. And especially for those who just like looking at pictures.

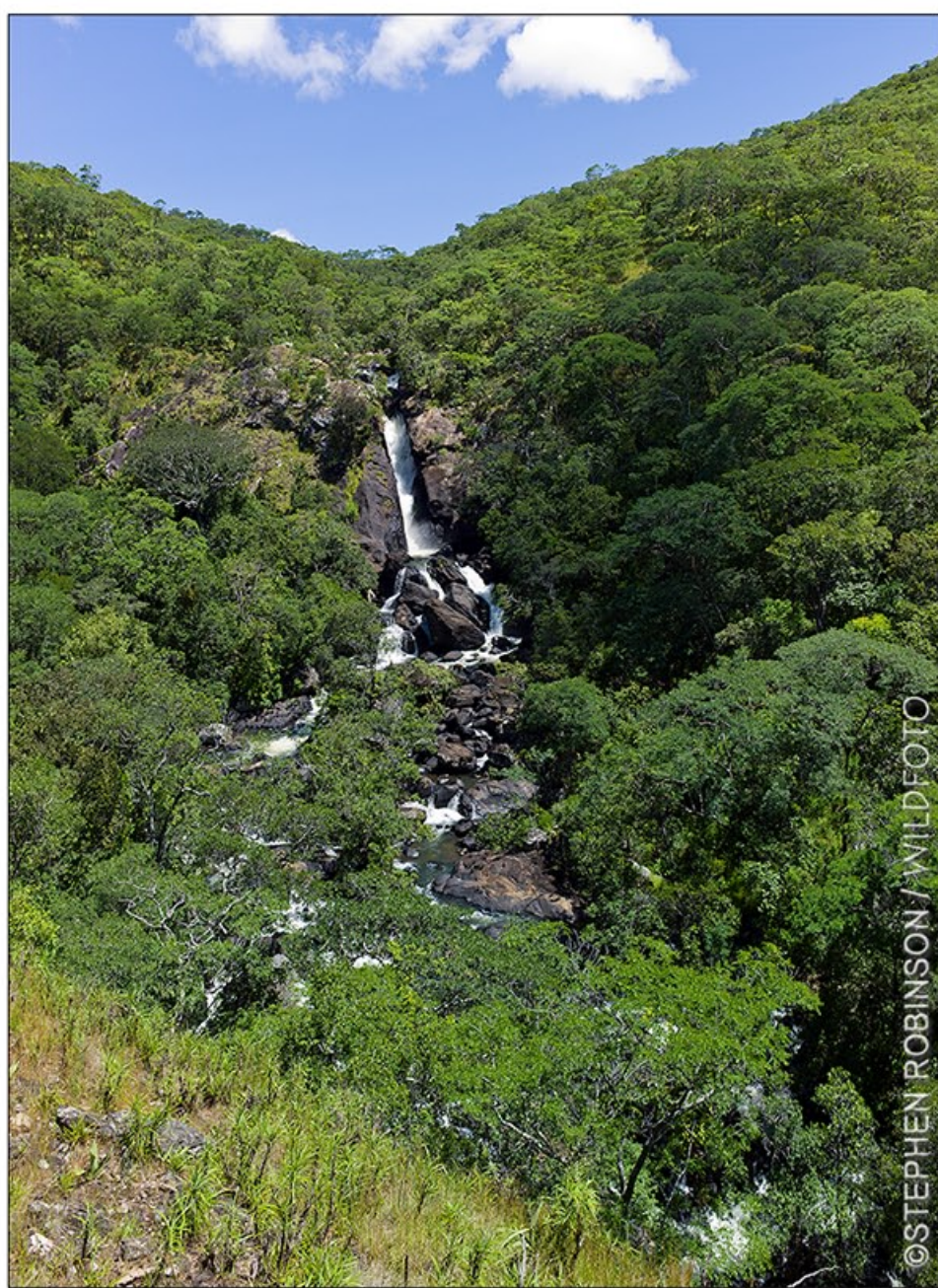
**Send your feedback - PhotoMail will be developed in line with what its subscribers want to see**  
 Photomail is available for free subscription by emailing me at [wildfoto@wildfotoafrica.com](mailto:wildfoto@wildfotoafrica.com)

## The Story Behind the Pictures: "A Trip North"

In this PhotoMail, some more shots from a recent short trip to the Muchinga Escarpment in Northern Zambia.



**Dawn, Muchinga Escarpment**  
 Sunsets often disappoint, sunrises rarely disappoint. This was a very dull and overcast morning. But then, just for 30 seconds or so, the dawn light came out to paint the scene. It means waking very early and getting into position in the dark, but it's usually worthwhile just to be able to look. Getting the shot is just a bonus.



**Ceswa Falls, Mutinondo River, Muchinga Escarpment**  
 The traditional African Broom in this part of Africa is made from a high plateau plant called 'Ceswa', which can be seen growing in the bottom left of this scene. The stem is cut from the plant. One end becomes the handle and the other is beaten to form the head of the brush. The Ceswa waterfall takes its name from the shape of the Ceswa broom.



Leica M Summitux 50mmF1.4 ASPH

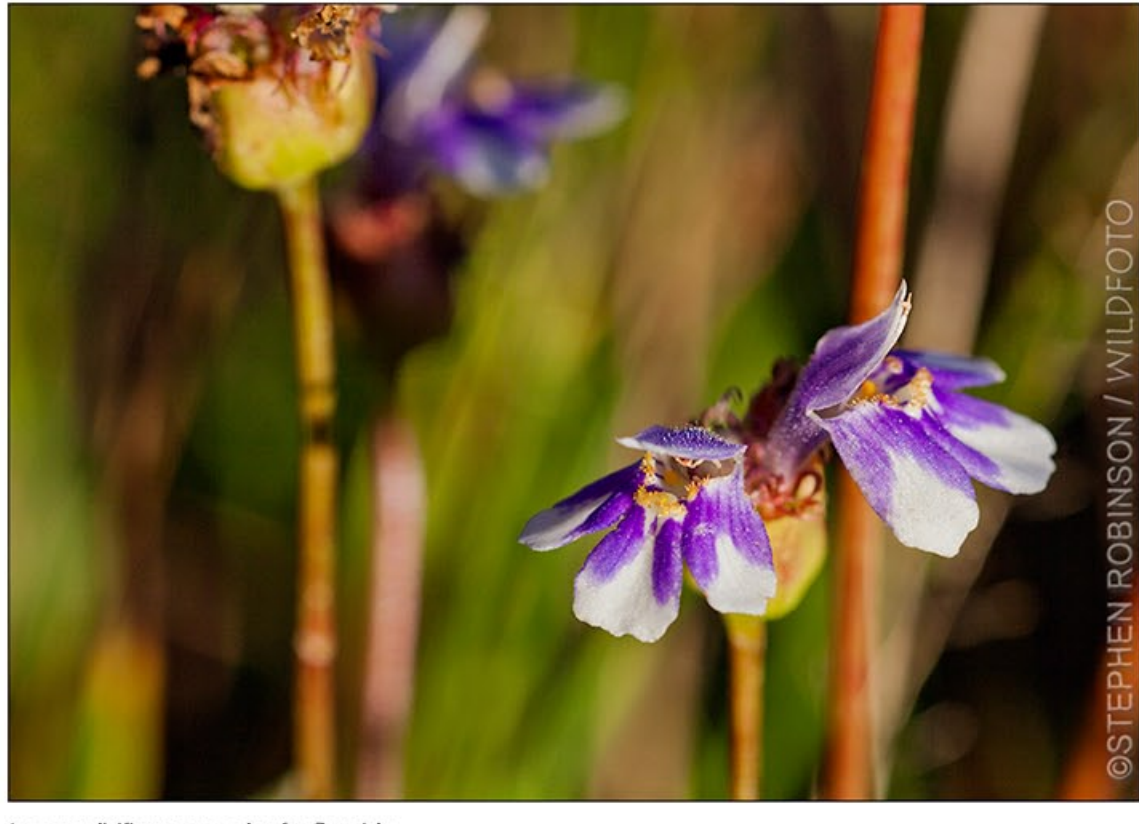


Leica M Summitux 50mmF1.4 ASPH



Leica M Summitux 50mmF1.4 ASPH

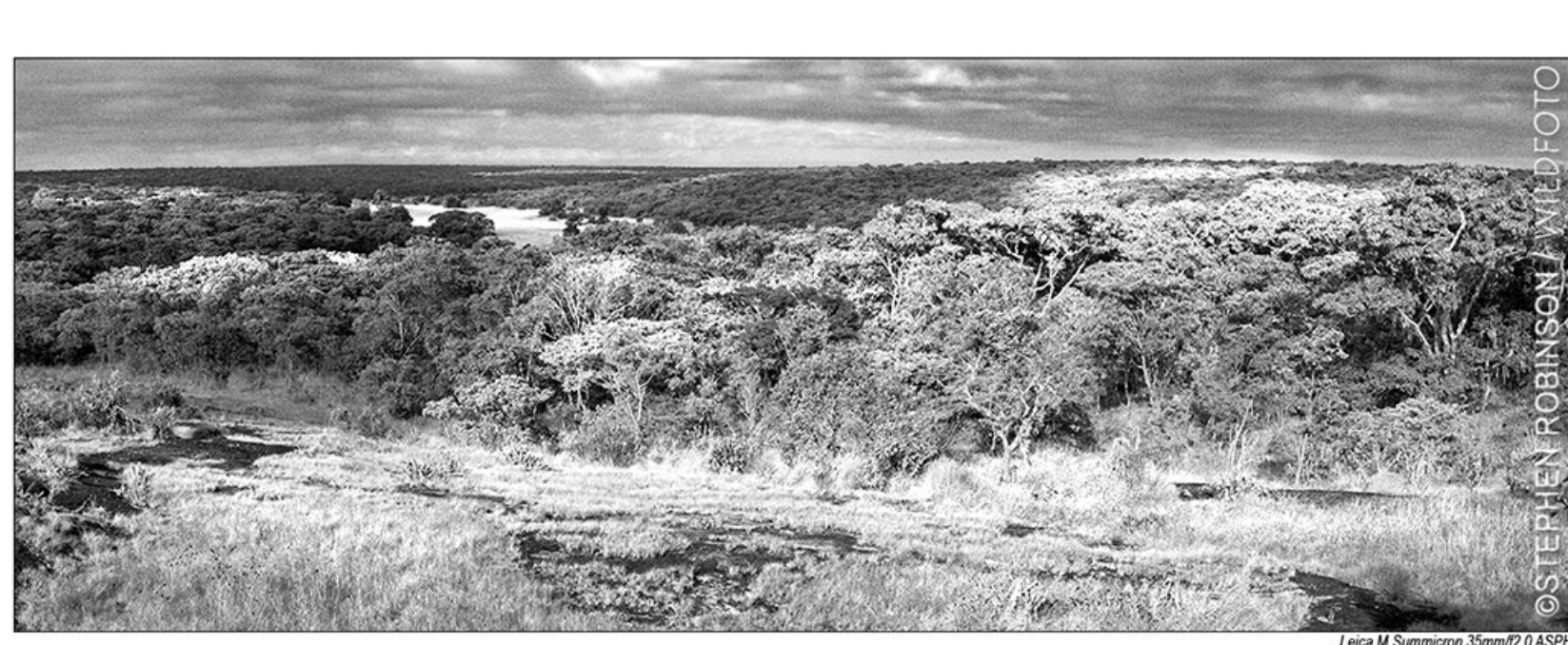
The 'Zambian' Protea or Northern Sugar Bush - *Protea angolensis*  
 A spectacular feature of the high plateau Miombo Woodland of central Africa is the flowering of this protea in the late rains. The plant is a non-descript, straggly bush, sometimes growing to the size of a small tree, with rough, leathery leaves. It's common throughout the Miombo at higher altitudes and remains unnoticed until around Easter time, when its milky white or deep pink flowers bloom.



**A new wildflower species for Zambia**  
 Quite recently, this beautiful little flowering plant occurring in the Mutinondo Wilderness area of Northern Zambia was discovered to be a species new to science. It was named after Mutinondo with the almost unpronounceable moniker '*Crepidodhropalon mutinondoensis*'. Its family's name is Scrophulariaceae, which makes things even more complicated. So it's referred to as 'the Mutinondo Scroph'.



Mutinondo Wilderness  
 Leica M Summitux 35mmF2.0 ASPH



**Miombo Woodland in Infrared**  
 The pristine Miombo Woodland of Mutinondo Wilderness - but as never seen by the human eye. The infrared part of the light spectrum is outside the red end of the visible part of the spectrum - quite literally "beyond the rainbow" as far as the human eye is concerned. Infrared photography involves using either infrared film or a filter to filter out all the light in the visible part of the spectrum. Either way, only infrared light is recorded. This also makes night-time photography possible.

**Advertisement**

### PHOTOGRAPHER FOR HIRE

Stephen Robinson is a photographer operating from his Zambia base. He undertakes photo assignment work in the corporate, industrial, mining, donor-aid project and environmental fields, including the production of photo based communications, advertising and promotional media.

This commercial work supports his nature photography speciality, including landscape, environment, conservation and wildlife work - and including his well-known panoramic photography project and exhibitions on the remote landscape, peoples and environment of Zambia.

**PROFESSIONAL PHOTOGRAPHY**  
 Assignments | Commercial | Calendars  
 Corporate Media | Features | Reportage  
 Nature & Landscape | Environment  
 Portraiture | Fine Art | Gallery

**SPIRIT OF THE LAND**  
 FINE ART PRINTS FROM THE PROJECT ON  
 PANORAMIC ZAMBIA  
[www.spirit-of-the-land.com](http://www.spirit-of-the-land.com)

**WILDFOTOAFRICA**  
 ALL NEW PORTFOLIO WEBSITE  
 Zambia, Africa & Beyond  
[www.wildfotoafrica.com](http://www.wildfotoafrica.com)

ENQUIRIES  
 EMAIL: [wildfoto@wildfotoafrica.com](mailto:wildfoto@wildfotoafrica.com)  
 TEL: +260 966 992999

The above photographs are available to order as Fine Art Prints  
 email enquiries to [wildfoto@wildfotoafrica.com](mailto:wildfoto@wildfotoafrica.com)  
 - worldwide delivery available -

**UPCOMING PhotoMail ISSUES**

- more impressions from four of Europe's big cities-
- zambia, africa & beyond - a new photo website-
- wildlife in black & white-
- congo mine, congo town-

**and the stories behind the pictures**

Back Issues - previous PhotoMail issues can be seen at the all new portfolio website  
[www.wildfotoafrica.com](http://www.wildfotoafrica.com)  
 ZAMBIA, AFRICA & BEYOND  
 click on the direct links above

If this PhotoMail has been sent to you in error, or if you want to cancel a subscription, please send an email with 'PhotoMail unsubscribe' in the subject header.

All photographs ©Stephen Robinson. All rights reserved. Photographs can be supplied as prints or made available for licensed use by first contacting me at [wildfoto@wildfotoafrica.com](mailto:wildfoto@wildfotoafrica.com)